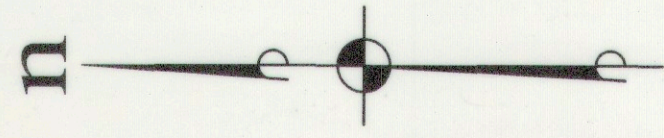


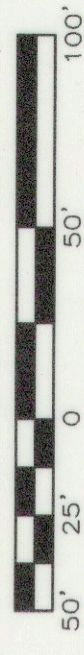
THE LEGACY AT SUNCADIA SUNCADIA - PHASE 1 DIVISION 6

A PORTION OF SECTIONS 19 AND 20, TOWNSHIP 20 NORTH, RANGE 15 EAST, W.M.
KITITIAS COUNTY, WASHINGTON

AUDITOR'S REFERENCE



SCALE: 1" = 50'



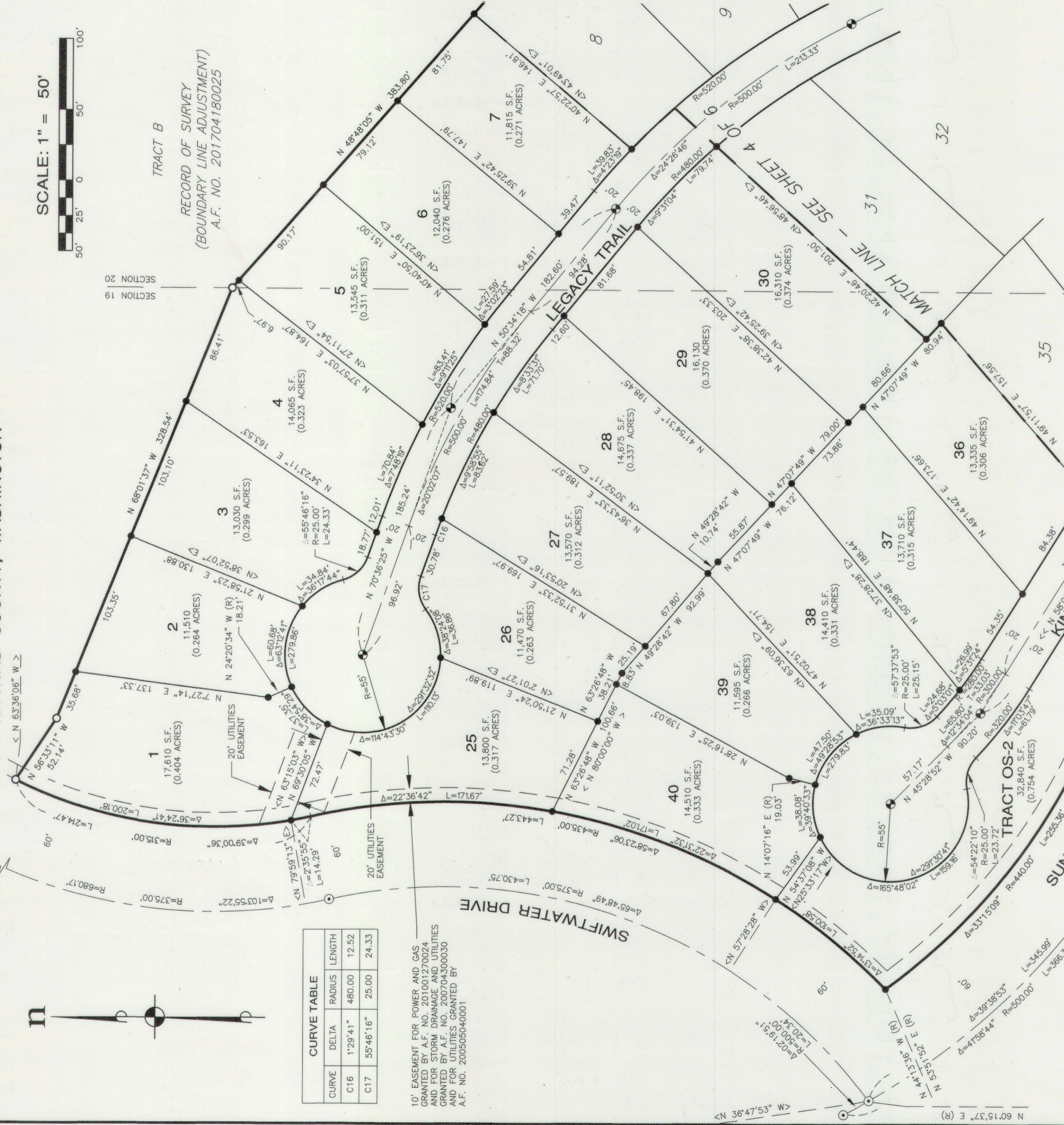
SECTION 19
SECTION 20

TRACT B

RECORD OF SURVEY
(BOUNDARY LINE ADJUSTMENT)
A.F. NO. 201704180025

CURVE TABLE		
CURVE	DELTA	LENGTH
C16	1°29'41"	480.00
C17	55°46'16"	25.00
		24.33

10' EASEMENT FOR POWER AND GAS GRANTED BY A.F. NO. 201001270024 AND FOR STORM DRAINAGE AND UTILITIES GRANTED BY A.F. NO. 2007043000030 AND FOR UTILITIES GRANTED BY A.F. NO. 200505040001



LEGEND

- SURFACE BRASS CAP, STAMPED: "L.S. 33148" SET IN CONJUNCTION WITH THE PLAT OF "MOUNTAINSTAR PHASE 1, DIVISION 2 (PLAT ALTERATION)", A.F. NO. 200506160038
- SET SURFACE BRASS CAP, STAMPED "L.S. 44925"
- FOUND REBAR AND CAP STAMPED "HGG PELS 6422"
- SET 5/8" REBAR WITH CAP STAMPED: "ESM LLC 35142 44925". IN THE EVENT THAT A NON-REMOVABLE OBSTACLE PREVENTS SETTING THE ACTUAL PROPERTY CORNER, A STAMPED 2" ALUMINUM CAP WILL BE SET ON THE PROPERTY LINE AS AN OFFSET TO THE ACTUAL CORNER WITH THE DISTANCE TO THE ACTUAL CORNER NOTED THEREON.
- Δ DELTA
- R RADIUS
- L ARC LENGTH
- (R) RADIAL BEARING
- << >> RADIAL BEARING AT LOT CORNER
- << >> DISTANCE MONUMENT TO MONUMENT
- OS-1 OPEN SPACE TRACT - DESIGNATION NUMBER
- S-1 SERVICE TRACT - DESIGNATION NUMBER
- AC-1 ACCESS TRACT - DESIGNATION NUMBER



RECORDING CERTIFICATE

FILED FOR RECORD AT THE REQUEST OF KITITIAS COUNTY BOARD OF COMMISSIONERS,
THIS _____ DAY OF _____ A.D., 2017, AT _____ MINUTES PAST
_____ O'CLOCK _____ M., AND RECORDED IN VOLUME _____ OF PLATS, ON
PAGES _____, RECORDS OF KITITIAS COUNTY, WASHINGTON.

BY: _____ DEPUTY COUNTY AUDITOR
KITITIAS COUNTY AUDITOR

AUDITOR'S REFERENCE: _____



ESM CONSULTING ENGINEERS LLC
33400 8th Ave. S. #205
Federal Way, WA 98003

FEDERAL WAY 253) 838-6113
EVERETT (425) 297-9900

www.esmcivil.com

Civil Engineering | Land Surveying | Land Planning
Public Works | Project Management | Landscape Architecture

DATE: 2017-06-09

DRAWN BY: C.A.F./R.F.G.

JOB NO. 998-753-016-0002

SHEET 3 OF 6